



InterApp IA[®]



Pneumatic actuator

IA800



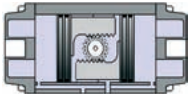
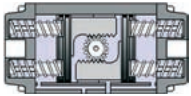
FLUIDS UNDER CONTROL

InterApp AG
Grundstrasse 24
CH-6343 Rotkreuz
Switzerland

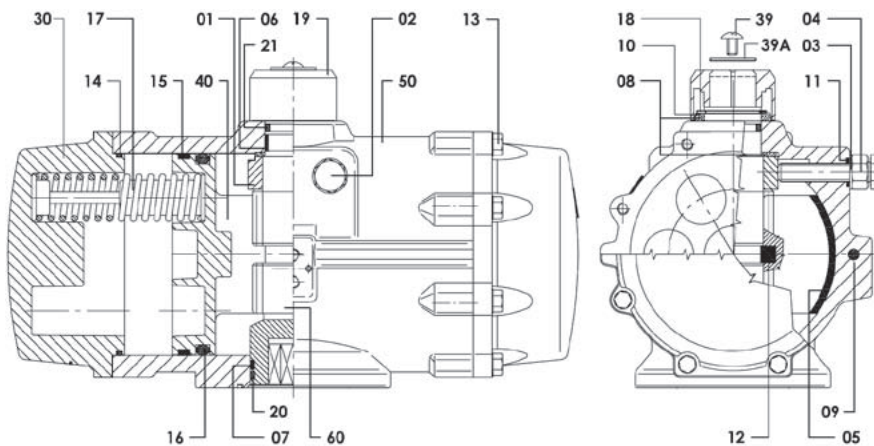
Tel. +41 (0)41 798 22 33
Fax +41 (0)41 798 22 34
<http://www.interapp.net>
info@ch.interapp.net

IA800 Pneumatic actuator

● Characteristics:

IA800	Pneumatic actuator	
Function	IA800D double acting 	IA800S single acting 
Supply pressure	2 ÷ 7 bar	
Supply fluids	Filtered air or neutral gas, lubricated or dry, or light hydraulic oil	
Working temperature	-20°C ÷ 80°C	
Connection	Mounting face for valves according to ISO 5211, for solenoid valves and accessories to VDI/VDE 3845 (NAMUR)	
Lubrication	Factory lubricated for the life of actuator under normal working conditions	

● Construction:



ITEM	PCS	DESCRIPTION	MATERIAL
01	1	OCTI-CAM (Stop arrangement)	GS 400-15
02	2	STOP CAP SCREW	A2 70
03	2	WASHER	1.4301
04	2	NUT (Stop screw)	A2 70
05*	2	BEARING (Piston back)	PA46
06*	1	BEARING (Pinion top)	PPS + GF
07*	1	BEARING (Pinion bottom)	PPS + GF
08*	2	THRUST BEARING (Pinion)	PA46
09*	2	PLUG	NBR
10	1	THRUST WASHER (Pinion)	1.4301
11*	2	O-RING (Stop screw)	NBR
12	2	PISTON GUIDE	PA66
13	16	CAP SCREW (End cap)	A2 70
14*	2	O-RING (End cap)	NBR
15*	2	BEARING (Piston head)	POM
16*	2	O-RING (Piston)	NBR
17	5-12	SPRING (Cartridge)	SiCr Spring Alloy Steel
18	1	SPRING CLIP (Pinion)	C75
19	1	POSITION INDICATOR	PA66 + GF
20*	1	O-RING (Pinion bottom)	NBR
21*	1	O-RING (Pinion top)	NBR
30	2	RIGHT AND LEFT END CAP	ALL. EN AC-46400
39	1	CAP SCREW (Indicator)	A2 70
39A	1	WASHER CAP SCREW (Indicator)	1.4301
40	2	PISTON	ALL. EN AC-46400
50	1	BODY	ALL. EN AC-42100
60	1	DRIVE SHAFT	C22

* Suggested spare parts for maintenance

FLUIDS UNDER CONTROL

InterApp AG
 Grundstrasse 24
 CH-6343 Rotkreuz
 Switzerland

Tel. +41 (0)41 798 22 33
 Fax +41 (0)41 798 22 34
<http://www.interapp.net>
info@ch.interapp.net

IA800 Pneumatic actuator

• Torques [Nm] - double acting actuator:



	Pneumatical torque at air supply of										[kg]
	2,5 bar	3 bar	3,5 bar	4 bar	4,2 bar	4,5 bar	5 bar	5,5 bar	6 bar	7 bar	
IA800D	2252	2703	3153	3604	3784	4054	4504	4955	5405	6306	127

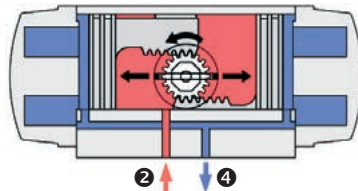
• Torques [Nm] - single acting actuator:



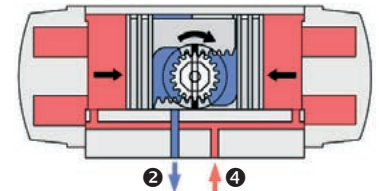
	Pneumatical torque at air supply of																Spring		[kg]				
	2,5 bar		3 bar		3,5 bar		4 bar		4,2 bar		4,5 bar		5 bar		5,5 bar		6 bar			7 bar		[Nm]	
	0°	90°	0°	90°	0°	90°	0°	90°	0°	90°	0°	90°	0°	90°	0°	90°	0°	90°		0°	90°	90°	0°
IA800 S 05	1332	1014	1783	1465	2233	1915	2684	2365	2864	2546	3134	2816	3585	3266							1238	920	144
S 06	1149	767	1599	1217	2049	1667	2500	2118	2680	2298	2950	2568	3401	3019	3851	3469					1486	1104	147,5
S 07			1415	969	1865	1420	2316	1870	2496	2050	2766	2321	3217	2771	3667	3222	4118	3672			1733	1288	151
S 08					1682	1172	2132	1623	2312	1803	2582	2073	3033	2524	3483	2974	3934	3424	4835	4325	1981	1472	154,5
S 09							1948	1375	2128	1555	2398	1825	2849	2276	3299	2726	3750	3177	4651	4078	2229	1656	158
S 10											2215	1578	2665	2028	3115	2479	3566	2929	4467	3830	2476	1839	161,5
S 11													2481	1781	2931	2231	3382	2682	4283	3582	2724	2023	165
S 12															2748	1983	3198	2434	4099	3335	2971	2207	168,5

• Function:

IA800D double acting actuator

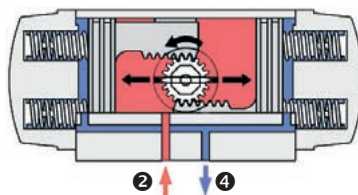


Air supplied to port 2 moves pistons toward endposition.
(-> 90° counterclockwise rotation).

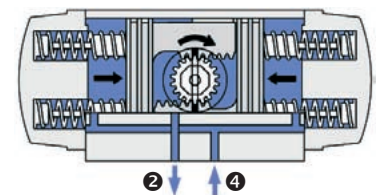


Air supplied to port 4 moves pistons toward center position.
(-> 90° clockwise rotation).

IA800S single acting actuator



Air supplied to port 2 moves pistons toward endposition, compressing springs:
(-> 90° counterclockwise rotation).



Air failure allows springs to move pistons toward center position:
(-> 90° clockwise rotation).

FLUIDS UNDER CONTROL

InterApp AG
Grundstrasse 24
CH-6343 Rotkreuz
Switzerland

Tel. +41 (0)41 798 22 33
Fax +41 (0)41 798 22 34
<http://www.interapp.net>
info@ch.interapp.net

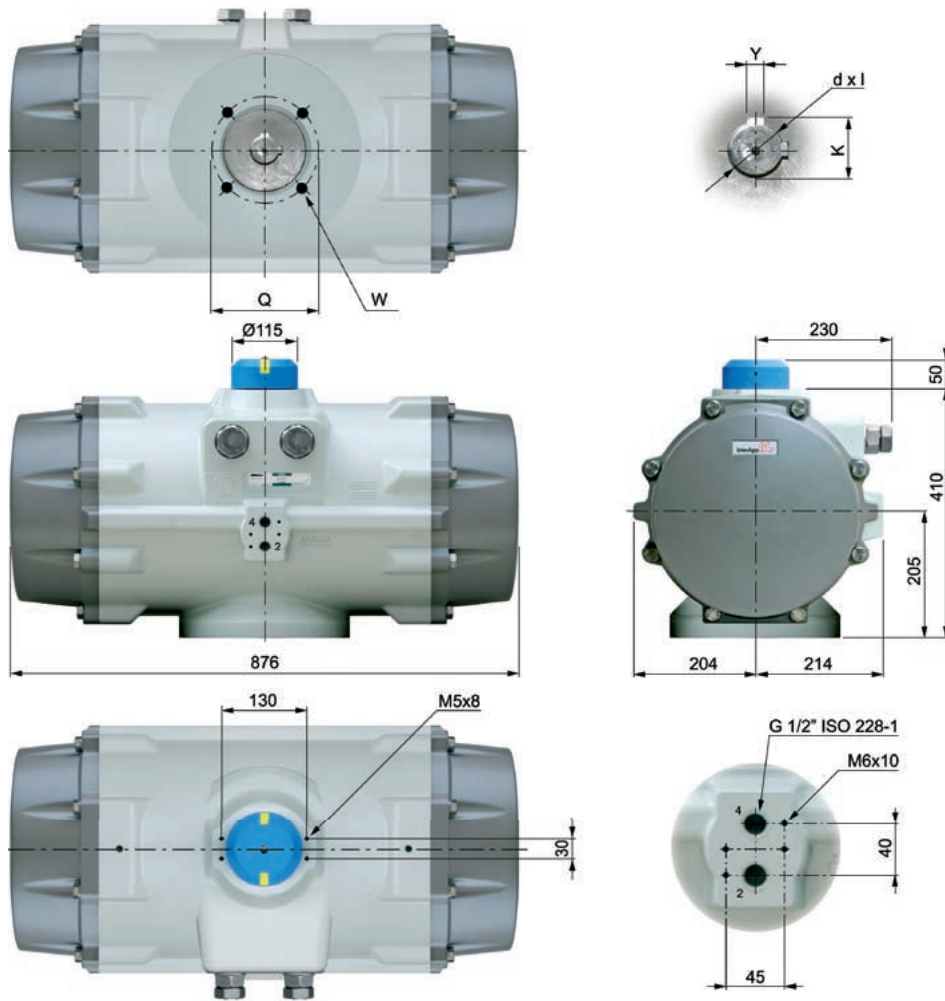
IA800 Pneumatic actuator

• Code key:

IA800 **D** . **F16** **72**
① ② ③ ④

① Actuator size	IA800	
② Function	D	Double acting
	S10	Single acting + number of springs
③ Mounting face for valve	F16 / F25	F16 or F25 according to EN ISO5211
④ Shaft connection	[mm]	Dimension of shaft connection

• Dimensions:



	Volume [litre]		Opening time [sec]	Closing time [sec]
	OPEN	CLOSE		
IA800D	25	40	6	7
IA800S	25	40	7,5	8,5

- To calculate the air consumption, multiply the volume in litre by the supply pressure.
- The above mentioned operating times are obtained under the following conditions:
Air supply pressure min. 5,5 bar (80 psi) - at room temperature - medium clean air - actuator stroke 90° - actuator without resistance load
- Solenoid valve and pipe ≥ DN 8

	EN ISO 5211	Q	W	d x l	K	Y
IA 800	F16	165	M20 (4x)	d60 x 80	18	64,5
				d65 x 65	18	69,5
				d70 x 80	20	75
	d72 x 80	20	77			
F25	254	M16 (8x)	d45 x 65	14	49	
			d70 x 80	20	75	

The technical data are noncommittal and do not assure you of any properties. Please refer to our general sales conditions.

FLUIDS UNDER CONTROL

InterApp AG
 Grundstrasse 24
 CH-6343 Rotkreuz
 Switzerland

Tel. +41 (0)41 798 22 33
 Fax +41 (0)41 798 22 34
<http://www.interapp.net>
info@ch.interapp.net